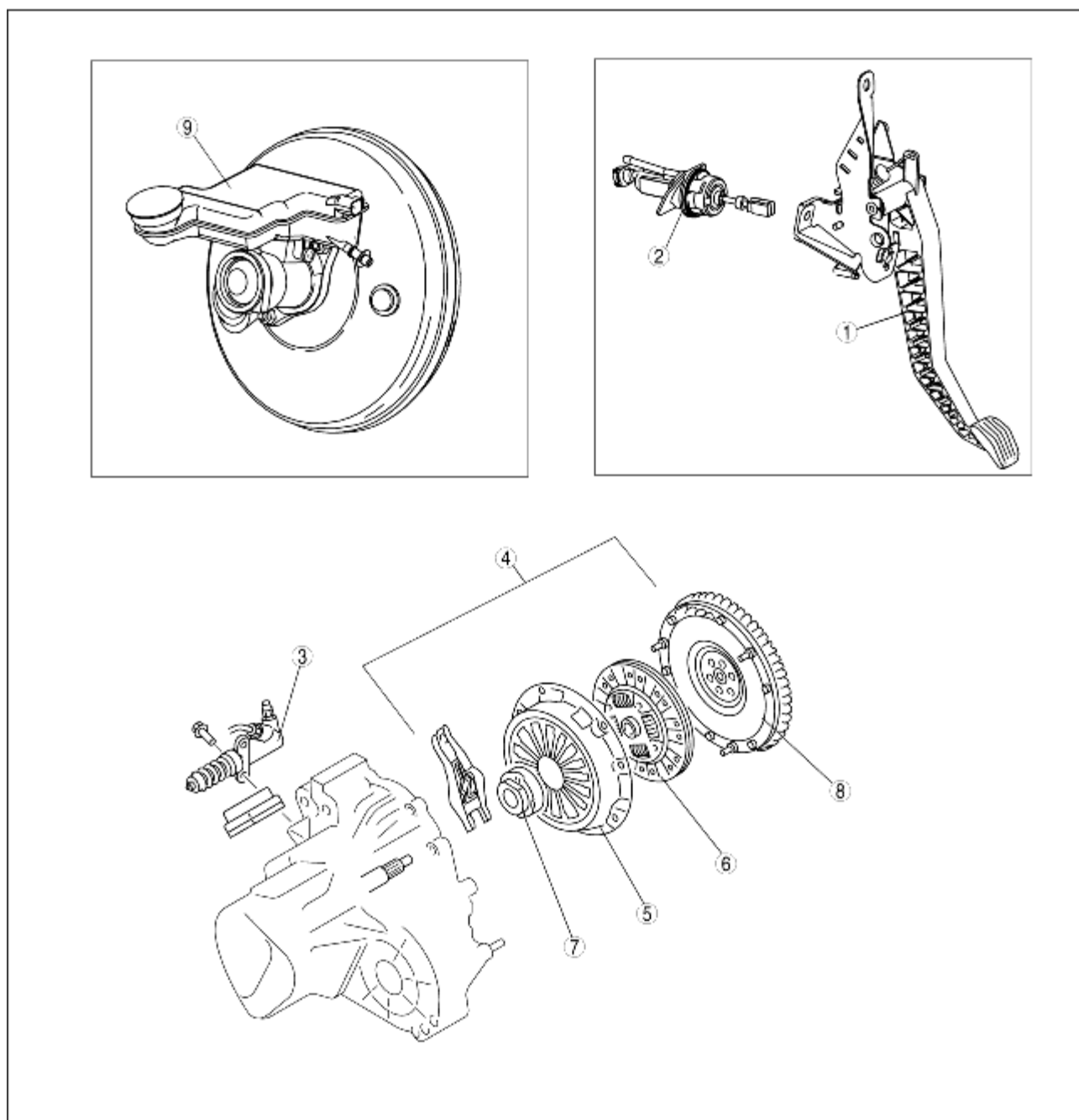


## CLUTCH LOCATION INDEX

B3E051016003W01



B3E0510W018

1	Clutch pedal (See <a href="#">CLUTCH PEDAL INSPECTION.</a> ) (See <a href="#">CLUTCH PEDAL REMOVAL/INSTALLATION.</a> )
2	Clutch master cylinder (See <a href="#">CLUTCH MASTER CYLINDER REMOVAL/INSTALLATION.</a> )
3	Clutch release cylinder (See <a href="#">CLUTCH RELEASE CYLINDER REMOVAL/INSTALLATION.</a> )
4	Clutch unit (See <a href="#">CLUTCH UNIT REMOVAL/INSTALLATION.</a> )

5	Clutch cover (See <a href="#">CLUTCH COVER INSPECTION.</a> )
6	Clutch disc (See <a href="#">CLUTCH DISC INSPECTION.</a> )
7	Clutch release collar (See <a href="#">CLUTCH RELEASE COLLAR INSPECTION.</a> )
8	Flywheel (See <a href="#">FLYWHEEL INSPECTION.</a> )
9	Clutch fluid (See <a href="#">CLUTCH FLUID INSPECTION.</a> ) (See <a href="#">CLUTCH FLUID REPLACEMENT.</a> )